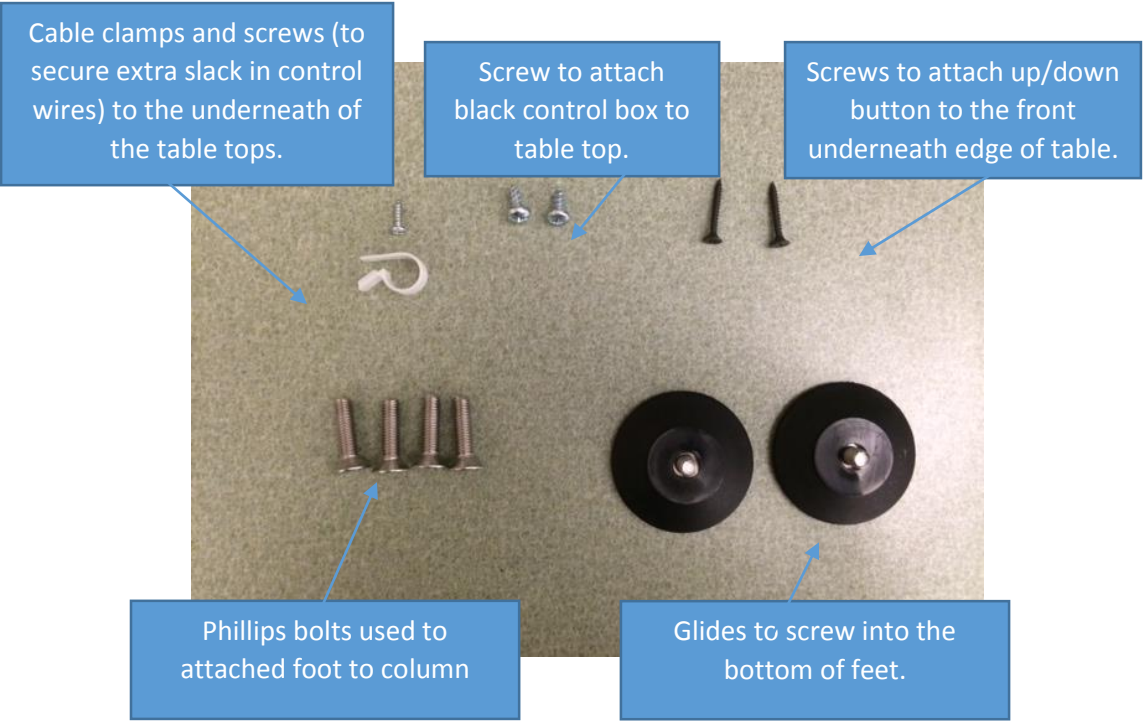
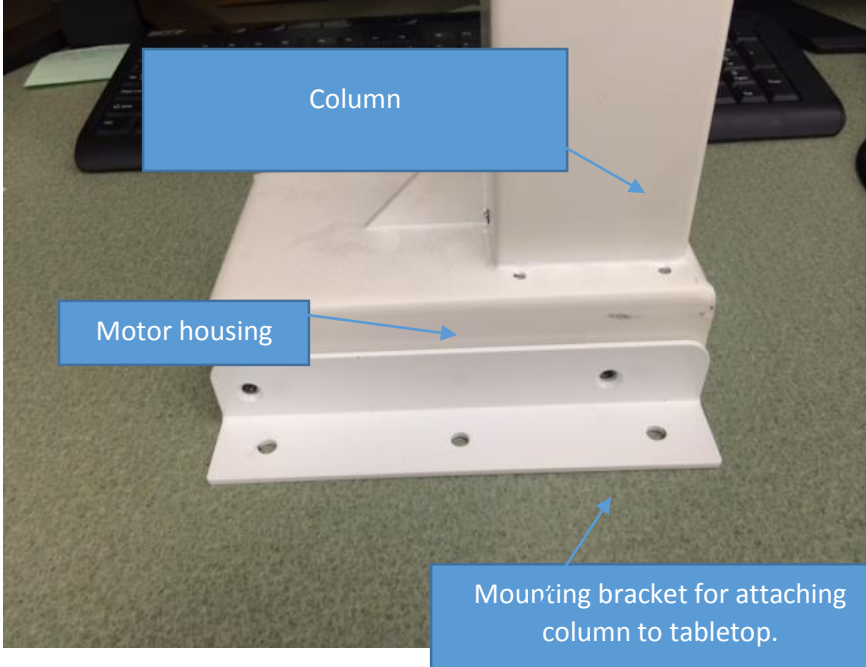


ValuLift Assembly Instructions

Parts List:



Assembly Instructions:

1. Attach white angled mounting brackets to columns using 6mm bolts included with shipment of white columns.
2. Attach flat plate feet to column using (4) Phillips bolts. Foot will run perpendicular to motor housing (see photo above). Please note: This is a universal foot with (5) holes, only 4 holes are used for this base. Screw in Black glides.
3. Flip table tops over and position columns in desired location. Standard is about 4"-5" from the left and right edge of table top. This distance may be less if a stretcher bar is being used.
4. Attach columns to tabletop with pan head screws in red packages. **(Warning: screws provided are to be used with 1 1/4" table tops. Please check table top thickness before attaching. Failure to do this can cause damage to the user side of table.)**
5. Attach black control box underneath tabletop along back non-user side.
6. Attach up/down button along front edge of user side with black screws.
7. Plug in wires running from column motor housing to control box and up/down button to control box.
8. Use white cable mounts to secure extra wire to the underneath of the top.
9. Plug in power cable to control box.
10. Flip base over.
11. Plug into wall outlet.
- 12. Reset unit by holding down both the up and down button together for 20-30 seconds until both columns return to lowest possible position.**
13. Test the travel of the columns by holding down the up button.